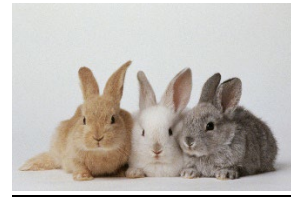


Department 14



OPEN YOUTH RABBIT

Carl Graham 734-678-2265 – Superintendent
Judging – Wednesday at 6:30 p.m.

MAIL ENTRIES TO: Kim Graham, 11033 Stoney Creek Rd., Milan, MI 48160 or email carlrab@comcast.net

Entry fee per class \$2.50, paid in fair office at time of arrival

- **Entries close August 21st, late entries will not be excepted.**
- **On the entry form or a plain piece of paper, print:**
 - Name, Address, Phone Number, Age as of January 1 of this year
 - Department Number
 - Section Number – Breed & Variety
 - Class Number – (Senior, 6-8; Junior – Buck, Doe-Meat Pen-Fur-Wool) and ear number
 - Want ribbons – yes / no
 - If judged in Fur Class or Wool Class, add \$2.50 to entry fee.
 - SENIORS: Rabbits over six months of age in 4 class breeds and over 8 months of age in the 6 class breeds. 6-8: rabbits 6-8 months of age.
 - JUNIORS: Rabbits under 6 months of age in both the 4 & 6 class breeds. Meat Pens: 3 rabbits not over 70 days of age and each not to be over 5 1/2 pounds in weight. They should be uniform in weight, color, type, and of the same breed.
 - BEST IN SHOW: the rabbits who win first place in the BREED CLASSES to compete against each other.
 - PREMIUMS paid by the Saline Community Fair and TROPHIES sponsored by Mid Tech, Inc.
 - Any changes or additions will be posted in the showroom.

RULES

1. Entries open to youth 6-19 as of January 1 of this year.
 2. The Saline Community Fair will not be responsible for stock or personal belongings in case of fire, theft, or accident. An attendant will be on duty 8:00 a.m.–10:00 p.m. NO CARRYING CASES left in showroom. PLEASE read all rules carefully before submitting your entry. You may FORFEIT premiums, and specials!
 3. NO DOGS IN SHOWROOM.
 4. **NO LATE ENTRIES.**
 5. Rabbits must be in showroom by 8:00 p.m. Tuesday. Rabbits will be released at 9:00 p.m. Sunday. ALL RABBITS put for sale MUST BE ENTERED in show and must stay until 9:00 p.m. Sunday. Rabbits may come in on Tuesday between 3:00–8:00 p.m.
 6. Rabbits must be permanently and legibly tattooed in their left ear, or they will be eliminated. Rabbits must have coop number with felt marker, in right ear.
 7. No stock to be sold or marked for sale until you have checked with the show Superintendent.
 8. Substitutions will be allowed ONLY in the same breed, sex, and class. No substitutions of rabbits after judging starts.
- This show is sponsored by the Saline Community Fair. This show is NOT sanctioned.

Top two youth meat pens must be sold at Livestock Auction and top two youths must be in rabbit barn by 6:30 p.m. You will need to provide a dish for the Auction dinner, ask the Superintendent what dish you should provide.

BREEDS & VARIETIES OF RABBITS ACCEPTED BY THE STANDARD OF PERFECTION OF THE A.R.B.A.

PREMIUMS FOR CLASSES IN:

Breed and Variety: Sections 1-193*Classes 242-247

Fur: Normal, Satin, Rex and Wool: Sections 194-197*Classes 248-249

Meat Pen: Section 198*Class 251

Premiums

1st \$4.00; 2nd \$3.00; 3rd \$1.00

Section No. 1 – 193 BREED AND VARIETY

Section No.

- | | | |
|--|---|---|
| 1. American (blue) | 45. English Spot (lilac) | 88. Lop – Mini (broken) |
| 2. American (white) | 46. English Spot (tortoise) | 89. Mini Rex (black) |
| 3. American Fuzzy Lop (solid) | 47. Flemish Giant (black) | 90. Mini Rex (blue) |
| 4. American Fuzzy Lop (broken) | 48. Flemish Giant (blue) | 91. Mini Rex (broken group) |
| 5. American Sable (sable) | 49. Flemish Giant (fawn) | 92. Mini Rex (lilac) |
| 6. Angora English (white) | 50. Flemish Giant (light gray) | 93. Mini Rex (castor) |
| 7. Angora English (solid) | 51. Flemish Giant (sandy) | 94. Mini Rex (chinchilla) |
| 8. Angora French (white) | 52. Flemish Giant (steel gray) | 95. Mini Rex (chocolate) |
| 9. Angora French (solid) | 53. Flemish Giant (white) | 96. Mini Rex (Himalayan) |
| 10. Angora Giant (white) | 54. Florida White (white) | 97. Mini Rex (lynx) |
| 11. Angora Satin (white) | 55. Harlequin (Japanese black) | 98. Mini Rex (opal) |
| 12. Angora Satin (solid) | 56. Harlequin (Japanese blue) | 99. Mini Rex (red) |
| 13. Belgium Hare | 57. Harlequin (Japanese chocolate) | 100. Mini Rex (sable point) |
| 14. Beveren (white) | 58. Harlequin (Japanese lilac) | 101. Mini Rex (seal) |
| 15. Beveren (blue) | 59. Harlequin (magpie black) | 102. Mini Rex (otter) |
| 16. Beveren (black) | 60. Harlequin (magpie blue) | 103. Mini Rex (tortoise) |
| 17. Britannia Petite (black otter) | 61. Harlequin (magpie chocolate) | 104. Mini Rex (white) |
| 18. Britannia Petite (black) | 62. Harlequin (magpie lilac) | 105. Netherland Dwarf (black) |
| 19. Britannia Petite (sable martin) | 63. Havana (black) | 106. Netherland Dwarf (blue) |
| 20. Britannia (chestnut) | 64. Havana (blue) | 107. Netherland Dwarf (broken) |
| 21. Britannia Petite (ruby-eyed white) | 65. Havana (broken) | 108. Netherland Dwarf (chocolate) |
| 22. California | 66. Havana (chocolate) | 109. Netherland Dwarf (lilac) |
| 23. Champagne D'Argent | 67. Himalayan (black) | 110. Netherland Dwarf (rew white) |
| 24. Checkered Giant (black) | 68. Himalayan (blue) | 111. Netherland Dwarf (white-bew) |
| 25. Checkered Giant (blue) | 69. Himalayan (chocolate) | 112. Netherland Dwarf (sable point) |
| 26. Chinchilla – American | 70. Himalayan (lilac) | 113. Netherland Dwarf (Siamese sable) |
| 27. Chinchilla – Giant | 71. Hotot | 114. Netherland Dwarf (Siamese smoke pearl) |
| 28. Chinchilla - Standard | 72. Jersey Wooly (group: broken) | 115. Netherland Dwarf (chestnut) |
| 29. Cinnamon | 73. Jersey Wooly (group: agouti) | 116. Netherland Dwarf (chinchilla) |
| 30. Crème D'Argent | 74. Jersey Wooly (group: pointed white) | 117. Netherland Dwarf (lynx) |
| 31. Dutch (black) | 75. Jersey Wooly (group; self) | 118. Netherland Dwarf (opal) |
| 32. Dutch (blue) | 76. Jersey Wooly (group: shaded) | 119. Netherland Dwarf (squirrel) |
| 33. Dutch (chinchilla) | 77. Jersey Wooly (group: tan pattern) | 120. Netherland Dwarf (otter) |
| 34. Dutch (chocolate) | 78. Lilac | 121. Netherland Dwarf (sable martin) |
| 35. Dutch (gray) | 79. Lionhead (rew white) | 122. Netherland Dwarf (silver martin) |
| 36. Dutch (steel) | 80. Lionhead (tortoise) | 123. Netherland Dwarf (smoke pearl martin) |
| 37. Dutch (tortoise) | | 124. Netherland Dwarf (tan) |
| 38. Dwarf Hotot (black) | 81. Lop – English (broken) | 125. Netherland Dwarf (fawn) |
| 39. Dwarf Hotot (chocolate) | 82. Lop – English (solid) | 126. Netherland Dwarf (Himalayan) |
| 40. English Spot (black) | 83. Lop – French (broken) | 127. Netherland Dwarf (orange) |
| 41. English Spot (blue) | 84. Lop – French (solid) | 128. Netherland Dwarf (steel) |
| 42. English Spot (chocolate) | 85. Lop – Holland (broken) | 129. Netherland Dwarf (tortoise shell) |
| 43. English Spot (gold) | 86. Lop – Holland (solid) | 130. New Zealand (black) |
| 44. English Spot (gray) | 87. Lop – Mini (solid) | |

- | | | |
|-------------------------------|------------------------------|---------------------------------|
| 131. New Zealand (broken) | 152. Rex (opal) | 173. Mini Satin (red) |
| 132. New Zealand (red) | 153. Rex (red) | 174. Mini Satin (Siamese) |
| 133. New Zealand (white) | 154. Rex (sable) | 175. Mini Satin (silver martin) |
| 134. Palomino (golden) | 155. Rex (seal) | 176. Mini Satin (tortoise) |
| 135. Palomino (lynx) | 156. Rex (white) | 177. Mini Satin (white) |
| 136. Polish (black) | 157. Rex (broken group) | 178. Mini Satin (other) |
| 137. Polish (blue) | 158. Rhinelander (standard) | 179. Silver (black) |
| 138. Polish (chocolate) | 159. Satin (black) | 180. Silver (brown) |
| 139. Polish (blue-eyed white) | 160. Satin (black otter) | 181. Silver (fawn) |
| 140. Polish (ruby-eyed white) | 161. Satin (blue) | 182. Silver Fox (black) |
| 141. Polish (broken) | 162. Satin (california) | 183. Silver Fox (blue) |
| 142. Rex (amber) | 163. Satin (chinchilla) | 184. Silver Martin (black) |
| 143. Rex (black) | 164. Satin (chocolate) | 185. Silver Martin (blue) |
| 144. Rex (black otter) | 165. Satin (copper) | 186. Silver Martin (chocolate) |
| 145. Rex (blue) | 166. Satin (red) | 187. Silver Martin (sable) |
| 146. Rex (California) | 167. Satin (siamese) | 188. Tan (black) |
| 147. Rex (castor) | 168. Satin (white) | 189. Tan (blue) |
| 148. Rex (chinchilla) | 169. Satin (broken group) | 190. Tan (chocolate) |
| 149. Rex (chocolate) | 170. Satin (other) | 191. Tan (lilac) |
| 150. Rex (lilac) | 171. Mini Satin (chinchilla) | 192. Thrianta |
| 151. Rex (lynx) | 172. Mini Satin (opal) | 193. Any other |

SECTION 1 - 193 BREED & VARIETY

Class No.

- | | | |
|------------------|---------------|------------------|
| 242. Senior Buck | 244. 6/8 Buck | 246. Junior Buck |
| 243. Senior Doe | 245. 6/8 Doe | 247. Junior Doe |

SECTION 194 – 197 FUR

Section No.

- | | |
|-----------------|-----------------|
| 194. Normal Fur | 196. Satin Fur |
| 195. Rex Fur | 197. Wool Class |

Class No.

- | | |
|------------|------------|
| 248. Solid | 249. White |
|------------|------------|

SECTION 198 MEAT PENS

Class No.

251. Youth Meat Pen

SPECIALS – SECTION 199 SHOW TROPHIES

Class No.

- | | | |
|---------------------------------|---------------------------------|----------------------------------|
| 252. Best of Show, Youth Trophy | 254. Best 6 Class, Youth Trophy | 256. Meat Pen – Reserve Champion |
| 253. Best 4 Class, Youth Trophy | 255. Meat Pen – Grand Champion | |

SPECIALS – SECTION 200 SHOWMANSHIP

Showmanship awards: Trophy for 1st, Rosette 2nd & 3rd place

Class No.

- | | |
|------------------------------------|---|
| 269. Novice Exhibitor (6-8 years) | 271. Intermediate Exhibitor (13-14 years) |
| 270. Junior Exhibitor (9-12 years) | 272. Senior Exhibitor (15-19 years) |