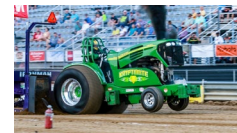


Department 105



MODIFIED STOCK TRACTOR PULLING

Scott Diuble 734-216-0476 or sbiuble@aol.com – Superintendent
Saturday 7:00 p.m.

NOTICE: The Saline Community Fair Association sponsoring this contest will not be responsible for accidents or damages to tractors, drivers, or spectators.

Rules

1. NTPA Wolverine State rules to govern all classes.
2. All pullers pay general admission. No entry fee.
3. Violation of any rule shall constitute a disqualification
4. Contest to be governed by judge or judges will all decisions final.
5. Classes of pull area s follows:

Section 1 – “WOLVERINE STATE POINTS PULL”

Premiums

1st \$625.00; 2nd \$525.00; 3rd \$425.00; 4th \$325.00; 5th \$280.00; 6th \$255.00; 7th \$240.00;
8th \$210.00; 9th \$190.00; 10th \$175.00

Class No.

3062. Super Stock - combo 3064. Super Farm 3065. Mini-Mod Tractors

Premiums

1st \$585.00; 2nd \$502.00; 3rd \$447.00; 4th \$392.00; 5th \$365.00; 6th \$310.00; 7th \$280.00;
8th \$241.00; 9th \$203.00; 10th \$175.00

Class No.

3063. Modified